

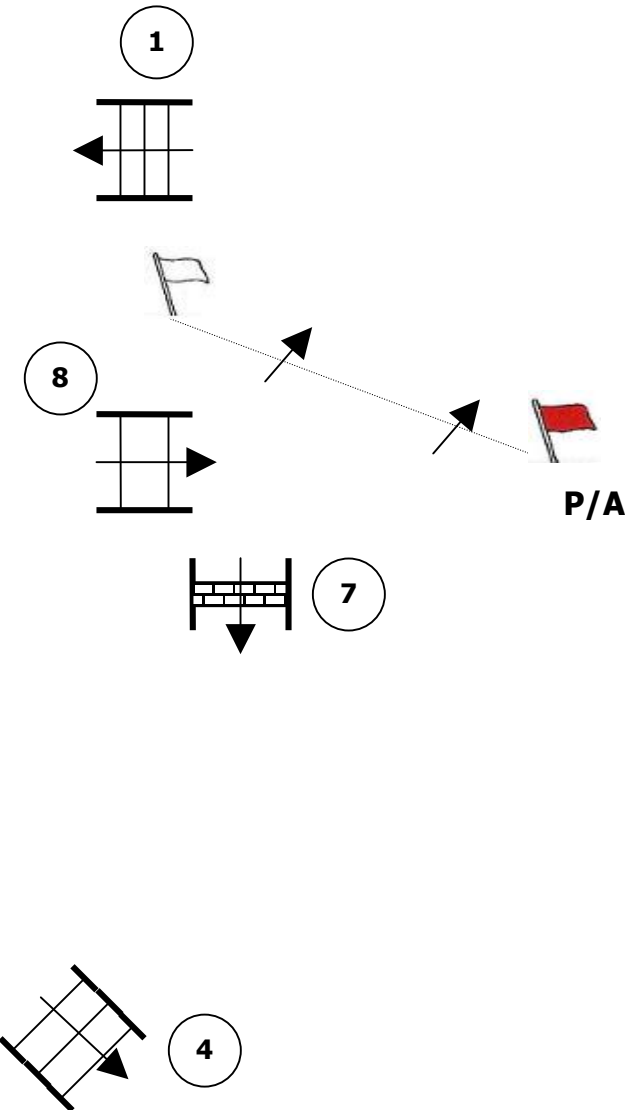
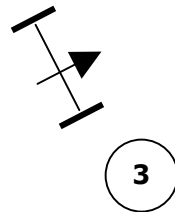
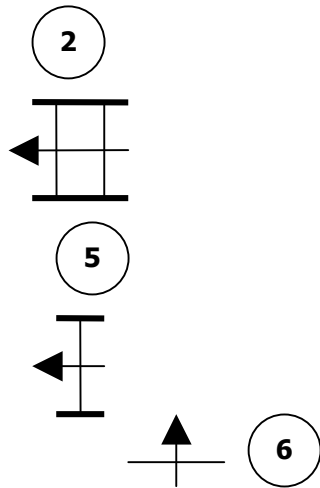
GIMKANA JUMP 55²

LEGGENDA

- 1 – ferro da stiro
- 2 – largo a Oxeer con invito
- 3 – croce
- 4 – triplice
- 5 – verticale con siepe o cancelletto
- 6 – cancelletto
- 7 – muro
- 8 – largo a Oxeer barriere pari

FORMULE

Precisione, regolarità,
equitazione, precisione con
barrage di equitazione



CAMPO 50/60 x 30/40